

IMAGINATIONS

REVUE D'ÉTUDES INTERCULTURELLES DE L'IMAGE ▪ JOURNAL OF CROSS-CULTURAL IMAGE STUDIES



IMAGINATIONS

JOURNAL OF CROSS-CULTURAL IMAGE STUDIES |
REVUE D'ÉTUDES INTERCULTURELLES DE L'IMAGE

Publication details, including open access policy
and instructions for contributors:

<http://imagination.csj.ualberta.ca>

Location and Dislocation

Editorial Team: Brent Ryan Bellamy, Daniel Laforest, Andriko Lozowy,
Tara Milbrandt, Carrie Smith-Prei, Sheena Wilson

September 6, 2017

To cite this article:

Hernández, Antonia. "The Moldy Strategy." *Imaginations* 8:2 (2017): Web (date accessed) 80-81. DOI: 10.17742/IMAGE.LD.8.2.9

To link to this article:

<http://dx.doi.org/10.17742/IMAGE.LD.8.2.9>



The copyright for each article belongs to the author and has been published in this journal under a [Creative Commons Attribution NonCommercial NoDerivatives 3.0](https://creativecommons.org/licenses/by-nc-nd/3.0/) license that allows others to share for non-commercial purposes the work with an acknowledgement of the work's authorship and initial publication in this journal. The content of this article represents the author's original work and any third-party content, either image or text, has been included under the Fair Dealing exception in the Canadian Copyright Act, or the author has provided the required publication permissions.

THE MOLDY STRATEGY

ANTONIA HERNÁNDEZ

The *Moldy Strategy* is part of a series of art experiments that interrogate what we do when we live with a digital network. In this video, mold, a common inhabitant of the house, performs under a microscope and becomes a vehicle for thinking through the network. It is an exploration of the ecology of the home that renders as an opportunity to speculate on complex interactions and companionships among all sort of components, including software and non-human bodies, data and space.

The *Moldy Strategy* proposes to observe a digital network as a circulation of affects, a transactional reality that, rather than being constrained to a computer screen, involves the domestic space and the bodies of their inhabitants. It is an exercise in thinking through the speculative (but possible) encounters with mold that gives insight into the nature and behaviour of that network, as well as clues about an imagined non-human domesticity.

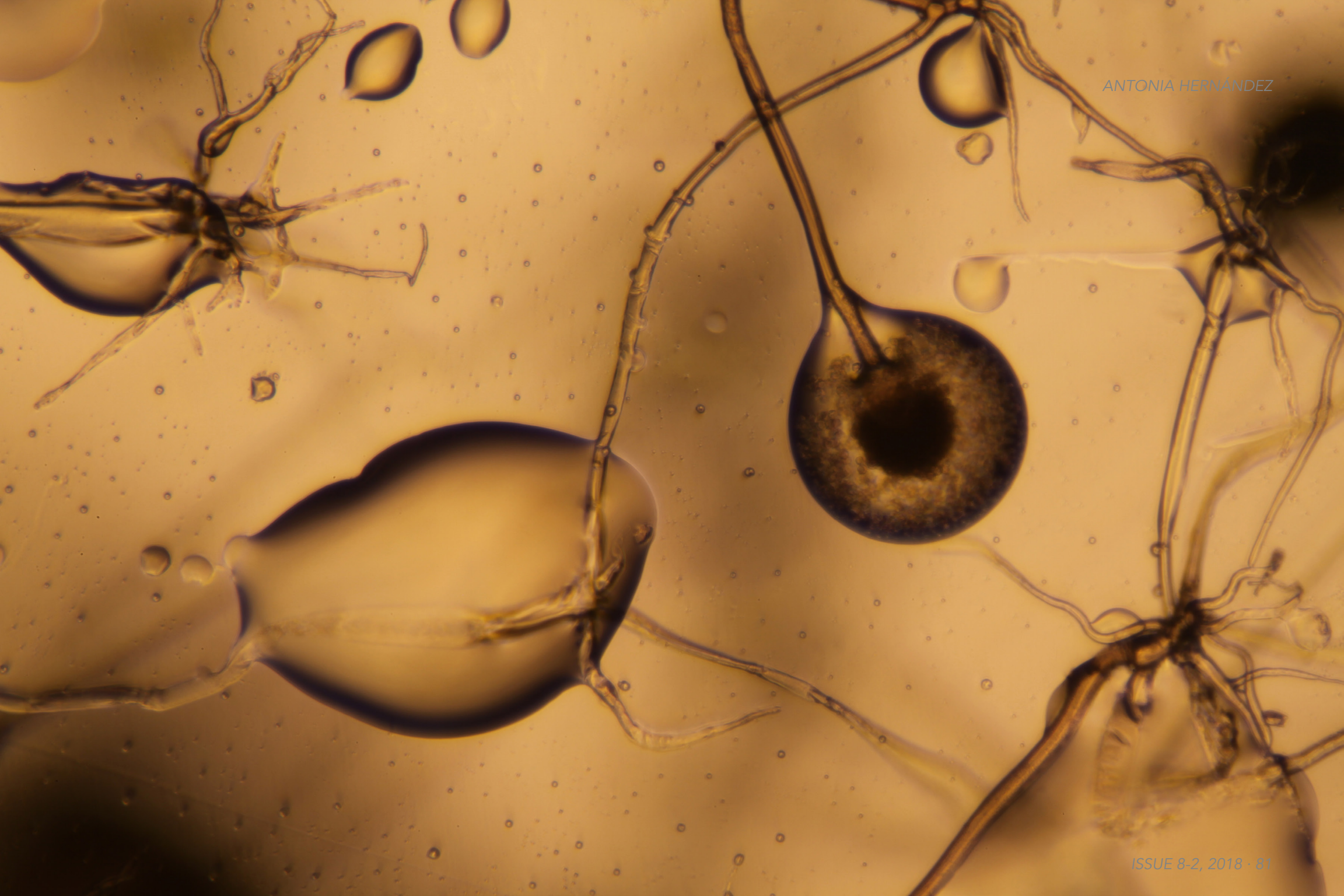
Mold appears here not as a metaphor for a network but rather as a vehicle that allows the imagination of some virtualities discarded in a human-based model. By stress-

ing the importance of non-human elements, an affective consideration of the ecology of domestic space shows how bits from different sorts can be mixed, creating new and unexpected entities. An exploration of domesticity in a networked context offers an opportunity to reflect on the entangled relationship between bodies and media, physicality, and metaphorical language. This complex interaction presents an alternative perspective to the current uniform model and vocabulary used to describe any kind of network, while taking into account processes, influences, and relationships among their components.

Further information at artwork.cordltx.org/the-moldy-strategy/

The Moldy Strategy would never have been possible without the support of Dr. Tagny Duff and FluxMedia, and Dr. Kim Sawchuk and the Mobile Media Lab, both at Concordia University.

Featured Image Credit: Antonia Hernández



ANTONIA HERNÁNDEZ